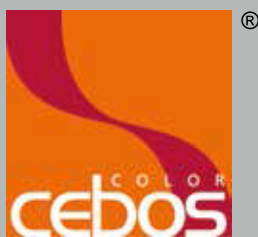




Finiture Preziose

professional quality, Italian elegance, continuous innovation
the line of decorative products to satisfy every style

Celbos

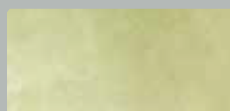


Finiture Preziose

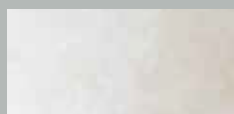
professional quality, Italian elegance, continuous innovation
the line of decorative products to satisfy every style



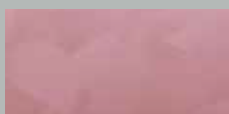
CeboSi Universal



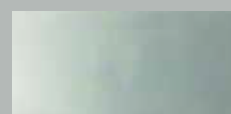
CeboTime



CeboStyle Antico
COLLECTION



CeboStyle Antico
PLATINUM



CeboStyle Antico
GALAXY

Glazing effects of

matt consistency.

Carved surfaces are covered

with coloured shadows,

for a new version of

the textured effect.

CeboSi Universal



1



2



3



4

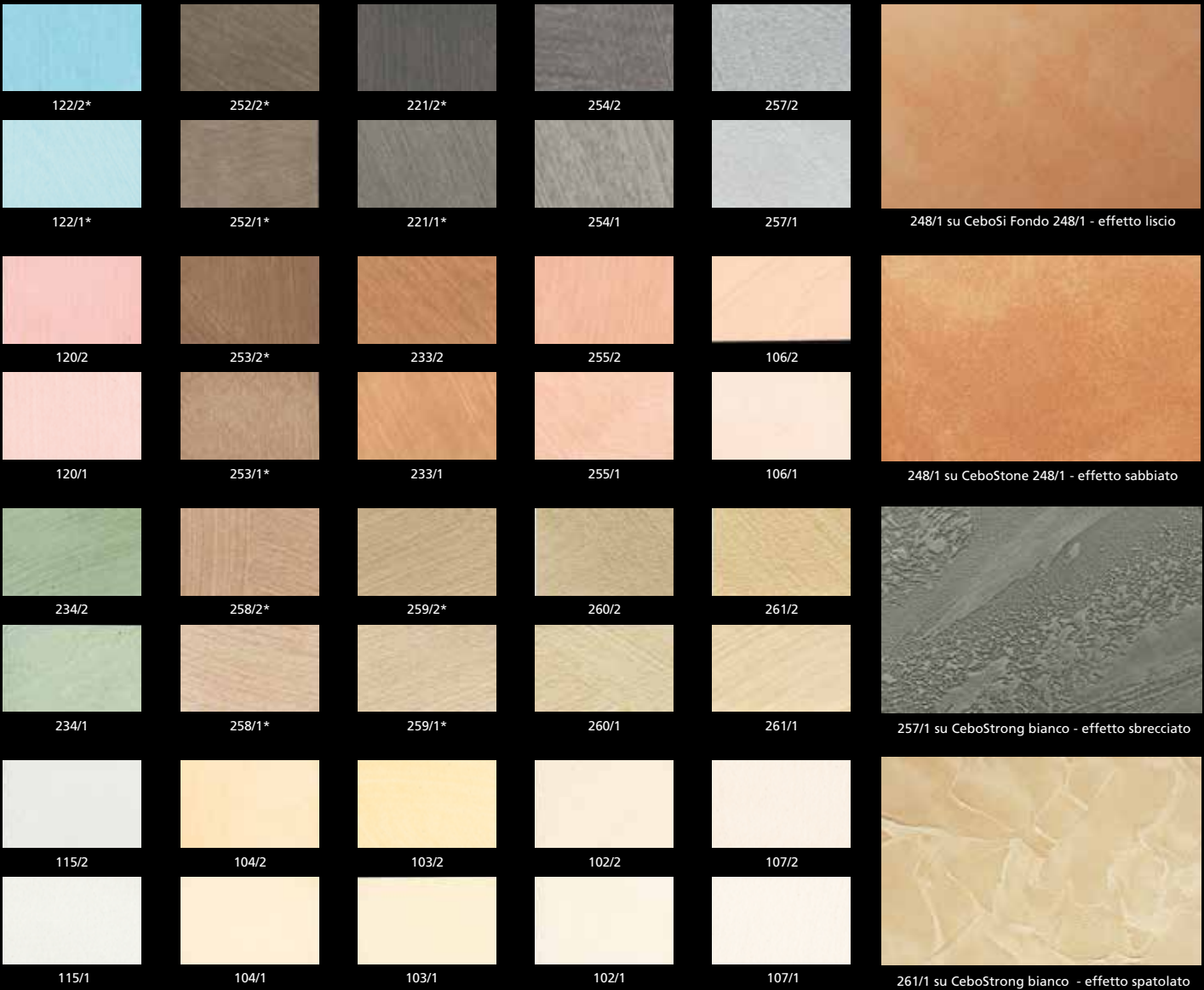


5



6

- 1_CeboSi Universal col. 247/2 - sandy effect
- 2_CeboSi Universal col. 223/1 - smooth effect
- 3_CeboSi Universal col. 261/1 - trowelled effect
- 4_CeboSi Universal col. 233/1 - smooth effect
- 5_CeboSi Universal col. 234/1 - smooth effect
- 6_CeboSi Universal col. 257/1 - breached effect



CeboSi Universal: acrylic, water based, matt, semi-hiding, washable finish for interiors and exteriors. CeboSi Universal is the ideal product to create lime-wash and soft shaded matt effects, over gypsum or fine rendered plasters, as long as suitably prepared. CeboSi Universal can be applied on various base coats thus creating different decorative effects.

Surface treatment for smooth effect

In case of new or recently repaired walls and highly absorbent or chalky substrates, carefully clean the surface and apply a coat of primer **CeboFix M**, by paintbrush, diluted 1:1 with water.

Surface treatment for sandy - trowelled - breached effect

Carefully clean the surface and apply one or two coats of pigmented primer **CeboFix R**, by roller, in order to uniform the surface.

Application cycle for smooth effect

Apply one or two coats of CeboSi Fondo, in the same colour of the finish, with a short pile roller to reach a perfect cover of the surface. Wait until it is completely dry. Apply **CeboSi Universal** in one coat with the appropriate **CeboSi brush**, available in 2½ and 4 inches size, in crossed brush-strokes avoiding clear-cut squaring; continue the application to reach the already painted area with the empty brush, in order to avoid noticeable overlapping of colour.

Application cycle for sandy effect







Apply one coat of **CeboStone**, in the same colour of the finish, by paintbrush (7x3 cm or 10x3 cm) in crossed brush-strokes to obtain a variance in the texture, with smooth and sandy reliefs.Wait until it is completely dry. Apply CeboSi Universal with the appropriate **CeboSi brush**, as described for the smooth effect.

Application cycle for trowelled effect

Apply **CeboStrong** with a stainless steel trowel in a uniform layer on the entire surface; decorate with the trowel to attain the desired pattern. When the product is withering, smooth the surface with the trowel pressing lightly the parts in relief. Wait until it is completely dry. Apply **CeboSi Universal by sponge**, in two coats, diluted 10% with water: dip the sponge into the product and apply in uniform circular movements.

Application cycle for breached effect

Apply CeboStrong with a stainless steel trowel in a uniform thickness of 1-2 mm. When the product is still fresh decorate the surface with CeboSign specific tool to imitate the breached stones. To obtain a more natural effect, engrave an irregular pattern to avoid repetition in the design. Prior to the complete drying of the product, smooth the surface with the trowel pressing lightly the parts in relief. Should the product be too dry, wet the trowel with water. Apply CeboSi Universal by sponge, in two coats, diluted 10% with water, as described for the trowel effect.

	product	use	dilution (water)	approx. coverage	tool	drying time	colour
undercoat	CeboFix R	int/ext	20-30%	10-12 m²/L		min. 24 h	white
base coat	CeboSi Fondo smooth effect	int/ext	ready to use	10 m²/L		6-8 h	CeboKit & CCS
	CeboStone sandy effect	int/ext	5% max	7-8 m²/L		4-6 h	CeboKit & CCS
	CeboStrong trowelled effect breached effect	int/ext	ready to use	1,5 m²/L		6-8 h	white
finish coat	CeboSi Universal	int/ext	ready to use	8-10 m²/L on CeboSi Fondo 6-8 m²/L on CeboStone		4-6 h	CeboKit & CCS
			10%	6-8 m²/L on CeboStrong			



Cebo**Style** Antico

COLLECTION

Pure emotions arise

from rough silver.

Metallic shades

follow the character

of the surfaces,

*with a **softly embossed touch***

*or a **marked roughness.***

CeboStyle Antico

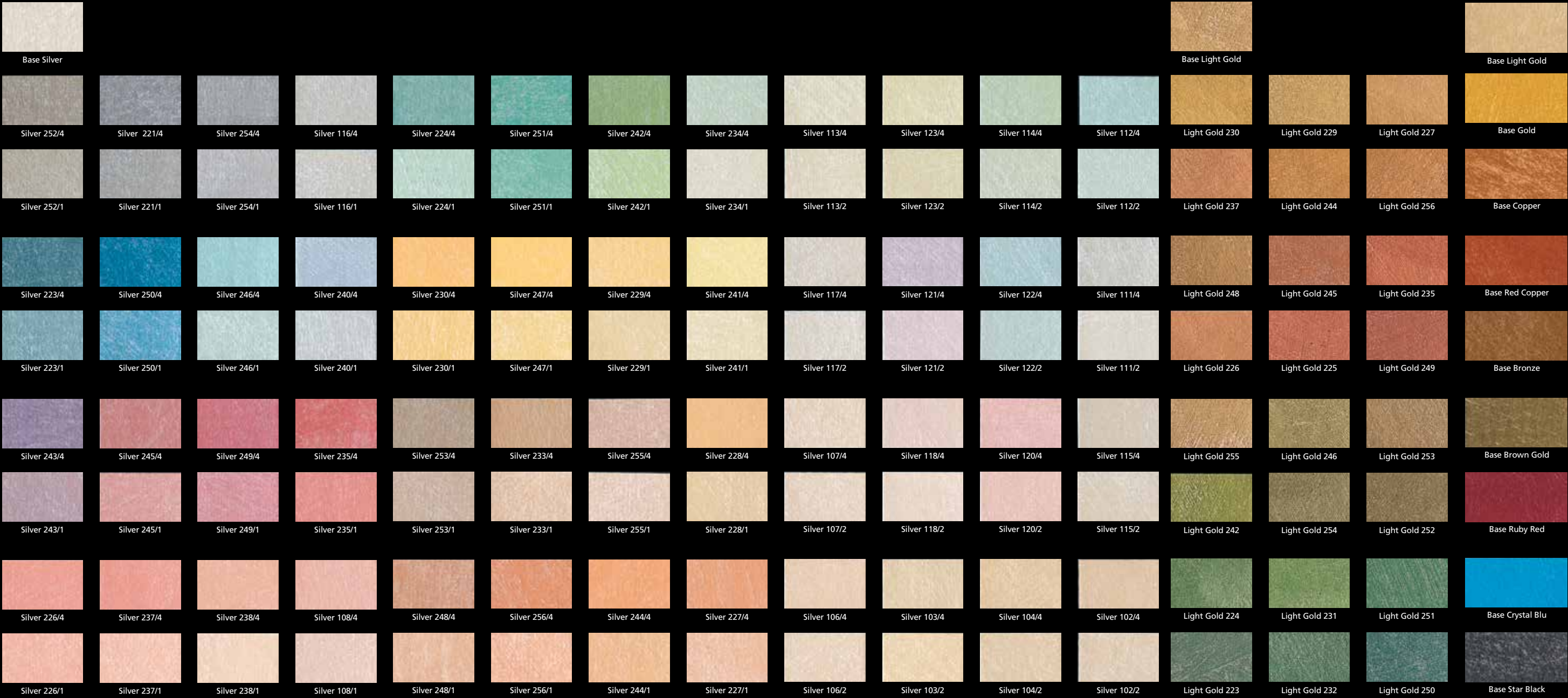
COLLECTION



- 1_CeboStyle Antico Ruby Red
- 2_CeboStyle Antico Silver XL col. 233/1
- 3_CeboStyle Antico Red Copper col. 250 + CeboGlitter Oro
- 4_CeboStyle Antico Star Black
- 5_CeboStyle Antico Silver col. 105/2
- 5_CeboStyle Antico Silver col. 243/4

CeboStyle Antico - COLLECTION

N.B.: these colours are lithographic prints and must therefore be considered as indicative only, and not binding.



CeboStyle Antico: Water-based acrylic finish for interiors. It is washable, covering and has a metallic look. It allows to achieve surfaces characterized by peculiar light contrasts which enhance both classical and modern environments, in line with current interior design trends. It is available in a wide range of basic tints to satisfy any requirement related to colour and metallic look: **Silver, Gold, Light Gold, Bronze, Brown Gold, Crystal Blu, Copper, Red Copper, Ruby Red, Star Black:** classical metallic effect. **Silver XL:** more defined and sharp metallic effect.



CeboStyle Antico can be applied on all types of support, as long as suitably prepared, in two coats, with the appropriate CeboSi paintbrush (available in 2½ and 4 inches): dip the brush into the product and apply to the surface in crossed brush-strokes avoiding clear-cuts. When the first coat is completely dry (after about 4-6 hours), apply the second coat with the same technique.

Surface treatment

Ensure that the substrates are perfectly clean, dry and uniform. In case of recently repaired walls, highly absorbent or chalky substrates, carefully clean the surface and apply a coat of priming fixative CeboFix M, by paintbrush, diluted 1:1 with water.

FondoPlus: water based, acrylic base coat with high covering properties and brilliant white. Apply one or two coats of product, with a short hair woollen roller, until the surface is entirely covered. Apply CeboStyle Antico when FondoPlus is completely dry.

CeboGlitter: powder additive for interiors, based on laminated glitter. When added to CeboStyle Antico, it gives the finish a sparkling appearance. Mix CeboGlitter to CeboStyle Antico shortly before the application. The prepared mixed product must be applied within 6 days.

	product	use	dilution (water)	approx. coverage	tool	drying time	colour
base coat	FondoPlus	interior	10%	8-10 m ² /L		6-8 h	white
finish coat	CeboStyle Antico	interior	ready to use	10 m ² /L		4-6 h	CeboKit & CCS

Preparation of the colours:

Silver and Silver XL	/1	CeboKit /2	/4
5 L	1x25 ml	2x25 ml	4x25 ml
2,5 L	12,5 ml	1x25 ml	2x25 ml
1 L	5 ml	10 ml	20 ml

Light Gold, Gold, Bronze, Crystal Blu, Copper, Red Copper e Ruby Red	CeboKit
2,5 L	1x25 ml
1 L	10 ml

CeboStyle Antico	CeboGlitter
5 L	2x100 g
2,5 L	1x100 g
1 L	1x40 g



Cebo**Style** Antico

PLATINUM

*The most **discreet**
among the precious metals
that combines **elegance**
and **simplicity**.*

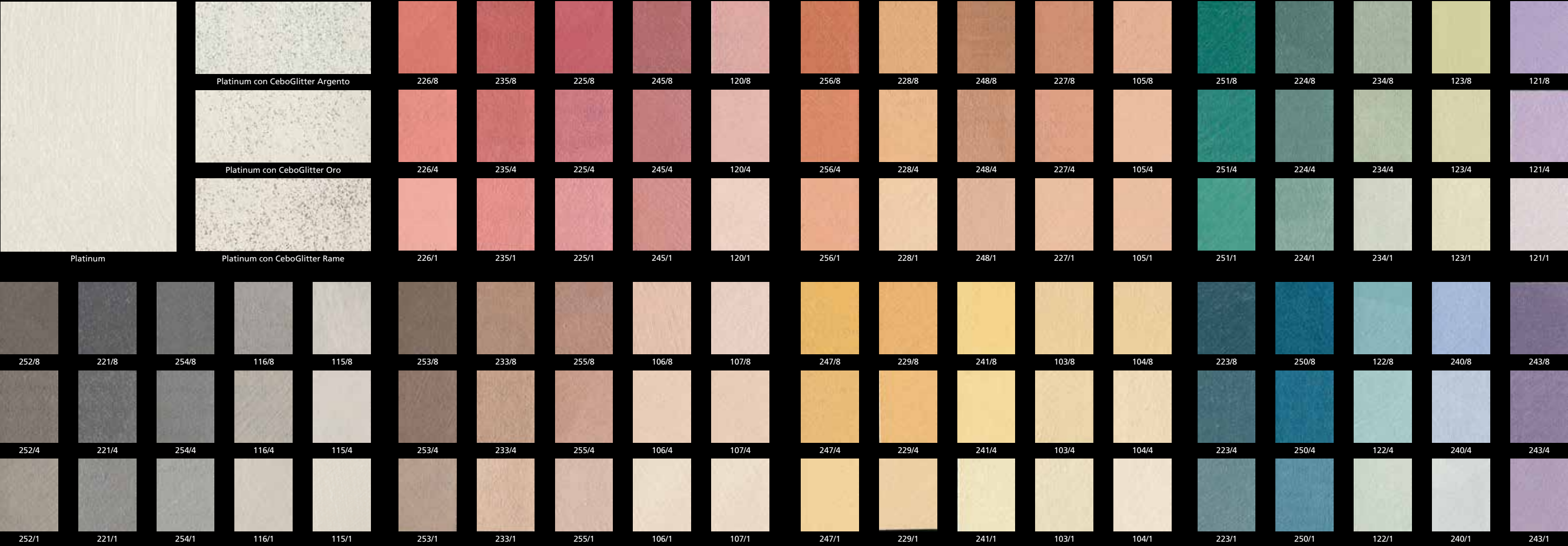
*Every kind of **ambience**
acquires an **exclusive**
and **comfortable** look.*

CeboStyle Antico

PLATINUM



- 1_CeboStyle Antico - PLATINUM col. 234/8
- 2_CeboStyle Antico - PLATINUM col. 253/8
- 3_CeboStyle Antico - PLATINUM col. 120/1
- 4_CeboStyle Antico - PLATINUM col. 240/4
- 5_CeboStyle Antico - PLATINUM col. 225/1
- 6_CeboStyle Antico - PLATINUM col. 247/8





CeboStyle Antico - PLATINUM: Water based, washable, full hiding paint for interiors with a slight metallic finish. Thanks to its special light contrasts it easily gives an exclusive look to every room. CeboStyle Antico PLATINUM can be applied on all types of supports, as long as suitably prepared, in two coats, with the appropriate CeboSi paintbrush (available in 2½ and 4 inches): dip the brush into the product and apply on the surface with crossed brush-strokes avoiding clear-cut squaring. When the first coat is completely dry (after about 4-6 hours), apply the second coat with the same technique.

Surface treatment
Ensure that the substrates are perfectly clean, dry and uniform. In case of recently repaired walls, highly absorbent or chalky substrates, carefully clean the surface and apply a coat of priming fixative CeboFix M, by paintbrush, diluted 1:1 with water.

FondoPlus: water based, acrylic based coat with high covering properties and brilliant white. Apply one or two coats of product, with a short-pile roller, until the surface is entirely covered. Apply CeboStyle Antico PLATINUM when FondoPlus is completely dry.

CeboGlitter: powder additive for interiors, based on laminated glitter. When added to CeboStyle Antico PLATINUM, it gives the finish a sparkling appearance. The addition of CeboGlitter must be done shortly before the application. The prepared mixed product must be applied within 6 days.

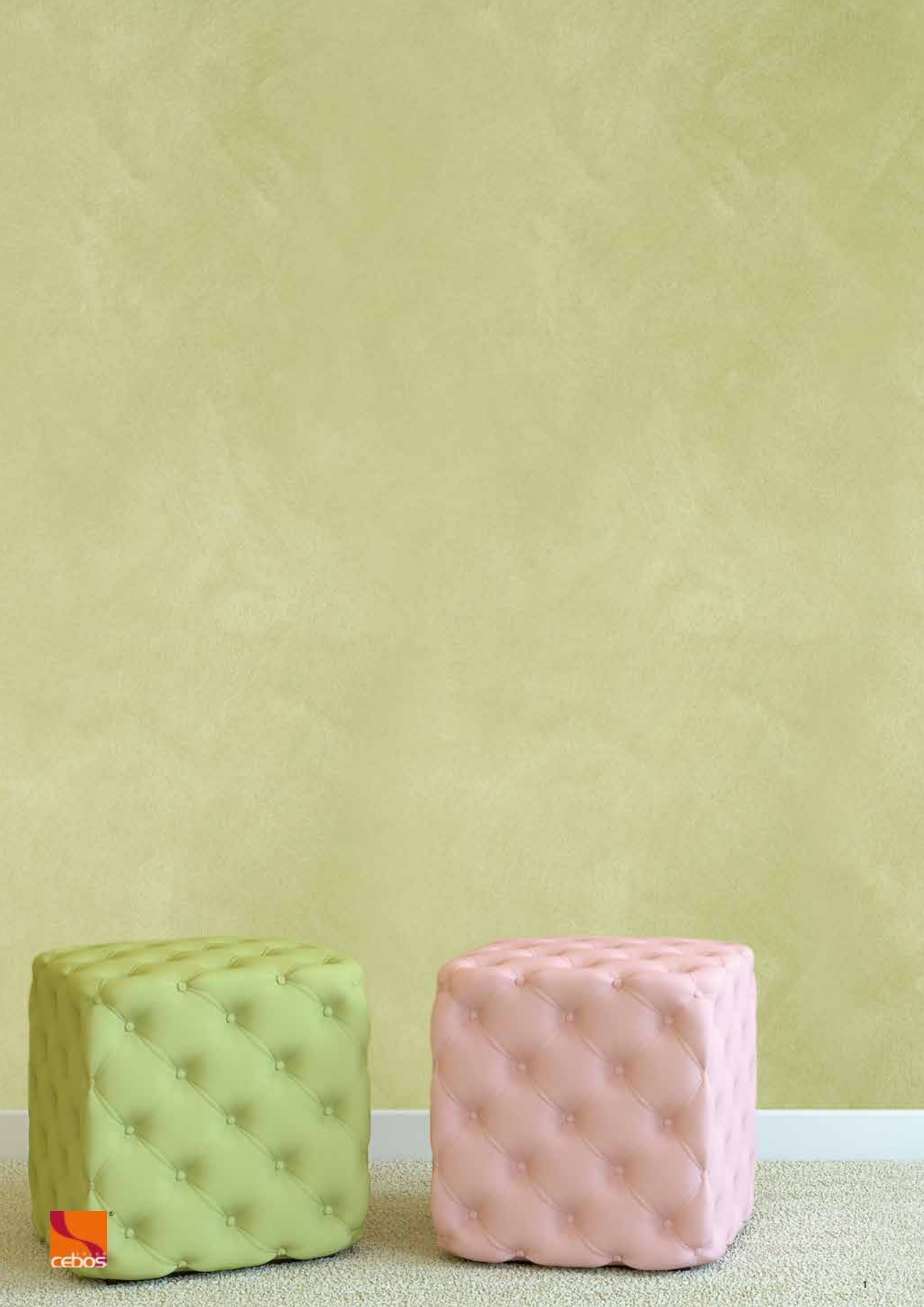
	product	use	dilution (water)	approx. coverage	tool	drying time	colour
base coat	FondoPlus	interior	10%	8-10 m ² /L		6-8 h	white
finish coat	CeboStyle Antico PLATINUM	interior	ready to use	10 m ² /L		4-6 h	CeboKit & CCS

Preparation of the colours:

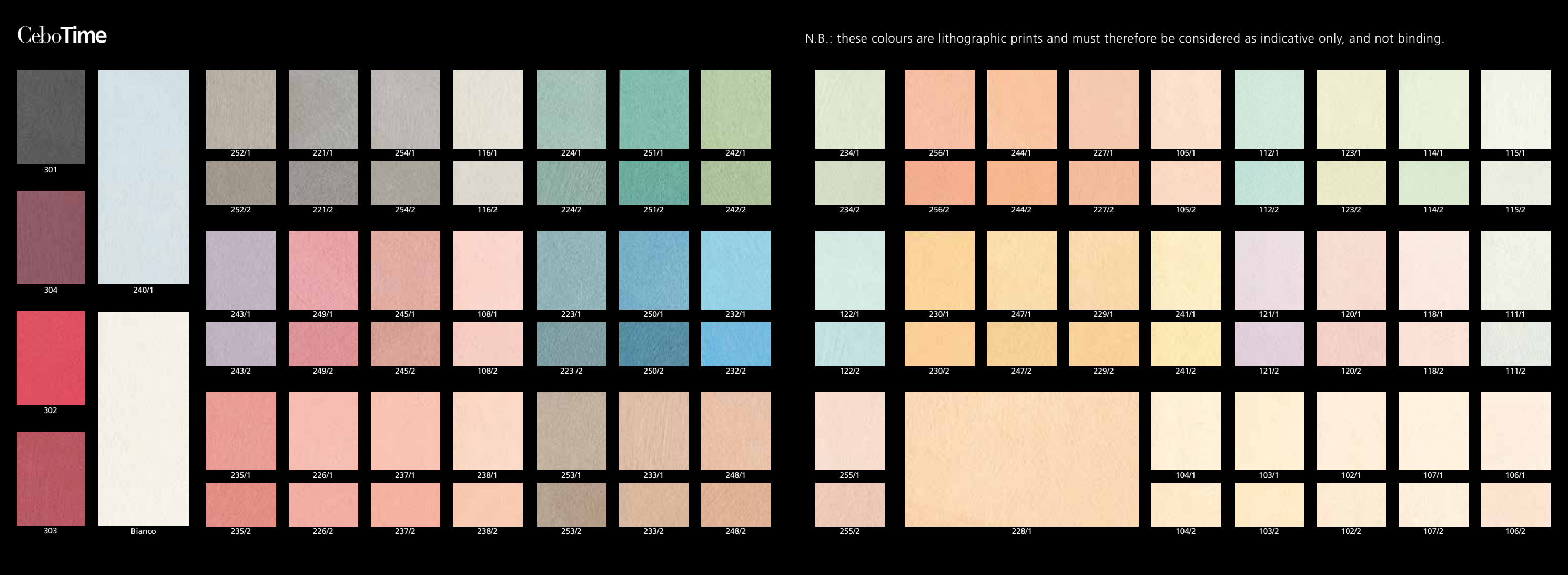
CeboStyle Antico PLATINUM	/1	CeboKit /4	/8	CeboGlitter
5 L	1x25 ml	1x100 ml	2x100 ml	2x100 g
2,5 L	12,5 ml	2x25 ml	1x100 ml	1x100 g
1 L	5 ml	20 ml	40 ml	1x40 g



*A gentle satin finish
for a decorative effect with
clear and **velvet** colours
that give **softness**
and **brightness**
to every surrounding.*



- 1_CeboTime col. 123/2
- 2_CeboTime col. 254/2
- 3_CeboTime col. 121/2
- 4_CeboTime col. 230/2
- 5_CeboTime Bianco





CeboTime: Acrylic, water based, washable finish for interiors, with low dirt pick-up and good mechanical resistance. CeboTime has a pearly and matt finish, it is easy to apply and it allows to obtain clear, neat and bright shades, as well as strong colours. The numerous chromatic possibilities make CeboTime a versatile finish, to give value to classic and modern environments. CeboTime can be applied on all types of support, as long as suitably prepared and prior to the application of the base coat FondoPlus. On the perfectly dry surface, apply one uniform layer of CeboTime, with CeboSi paintbrush (available in 2½ and 4 inches), in crossed brush-strokes being careful to avoid clear-cuts. For a more compact and consistent effect, when the first coat is completely dry (after about 4-6 hours) it is possible to apply a second coat, keeping in mind that a second layer will deepen the tone of the shade.

Surface treatment
Ensure that the substrates are perfectly clean, dry and uniform. In case of recently repaired walls, highly absorbent or chalky substrates, carefully clean the surface and apply a coat of priming fixative CeboFix M, by paintbrush, diluted 1:1 with water.

FondoPlus: water based, acrylic based coat with high covering properties and brilliant white. Apply one or two coats of product, with a short pile roller, until the surface is entirely covered. Apply CeboTime when FondoPlus is completely dry.

CeboMagic: additive in paste for interiors, based on holographic microglitter with a stunning three-dimensional effect and colorful look. When added to CeboTime it gives the surfaces a touch of magic. Mix CeboMagic to CeboTime shortly before the application. The prepared mixed product must be applied within 6 days.

	product	use	dilution (water)	approx. coverage	tool	drying time	colour
base coat	FondoPlus	interior	10%	8-10 m²/L		6-8 h	white
finish coat	CeboTime	interior	ready to use	10 m²/L		4-6 h	CeboKit & CCS

Preparation of the colours:

CeboTime	CeboKit /1	CeboKit /2	CeboKit 301 302 303 304
5 L	2x25 ml	4x25 ml	2x300 ml
2,5 L	1x25 ml	2x25 ml	1x300 ml
1 L	10 ml	20 ml	120 ml



